

UC San Diego

2024 Chancellors' Fall Space Review Academic Affairs Overview

Academic Affairs Overview

The 2024 Fall Space Review
Concluded 10/31/24 and
encompassed:

3.2M ASF

**100%
compliance**



9 Schools
8 Colleges
14 AA Units



69
Staff Members
Engaged



100
Buildings
Reviewed

Academic Affairs Space Overview



Schools

School Space Portfolio and Unassigned Offices

SUMMARY

School	Total Allocated Space ASF	Unassigned Offices by ASF			Unassigned Offices by Count		
		Total	Unassigned	Unassigned %	Total	Unassigned	Unassigned %
Arts & Humanities (SoAH)	329,795	73,205	2,751	4%	447	16	4%
Biological Sciences (SoBS)	309,946	53,488	4,435	8%	381	37	10%
Physical Sciences (SoPS)	446,603	109,205	10,494	10%	668	79	12%
Social Sciences (SoSS)	242,724	101,962	5,894	6%	720	44	6%
Jacobs School of Engineering (JSOE)	623,959	126,417	8,850	7%	756	76	10%
Global Policy & Strategy (GPS)	48,439	15,237	394	3%	103	3	3%
Rady School of Management	106,832	30,188	2,675	9%	158	20	13%
School of Computing Information & Data Sciences (SCIDS)	106,322	44,767	5,665	13%	257	38	15%
Preuss School	54,000		N/A			N/A	
TOTAL	2,268,620	554,469	41,158		3,490	313	

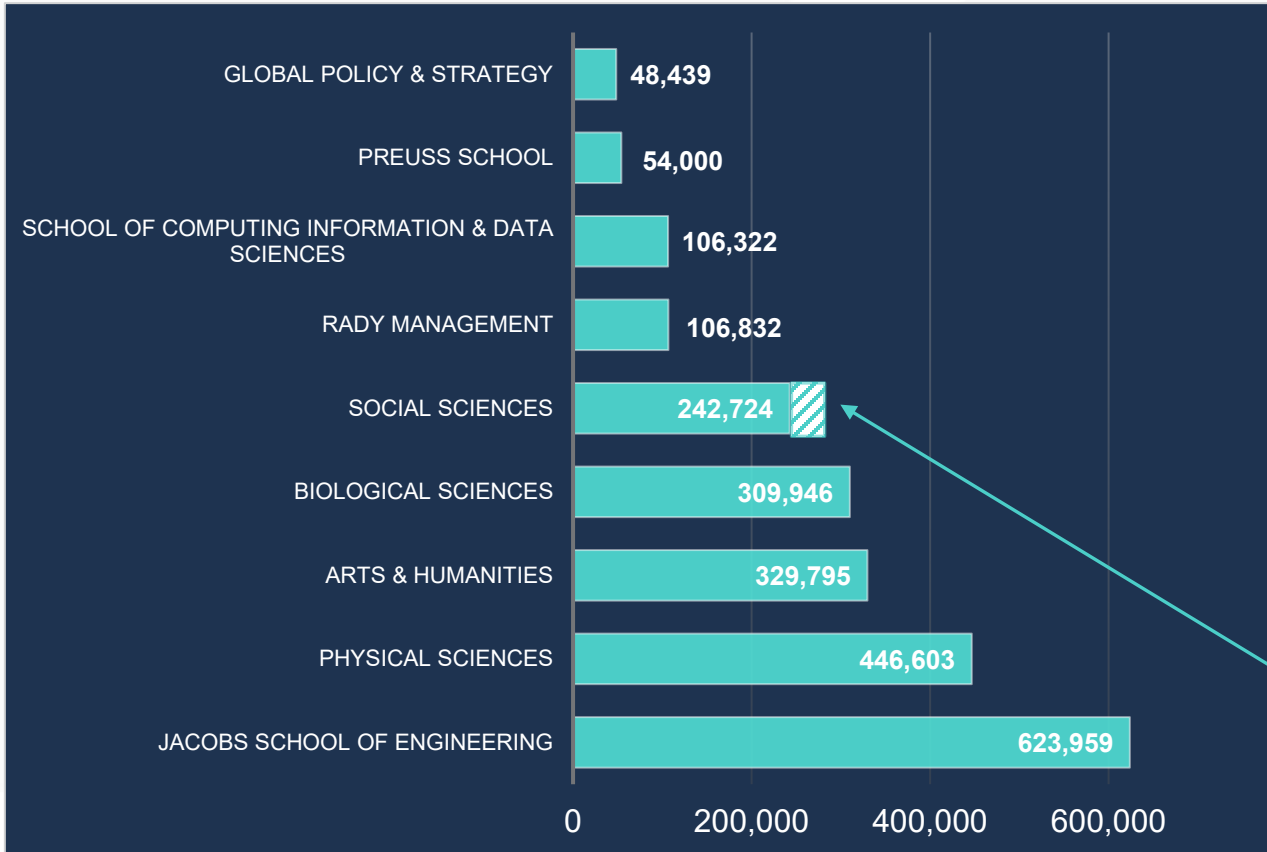
Data Sources:

Space/SF: Facilities Information System, Tririga

Enrollment: <https://blink.ucsd.edu/instructors/courses/enrollment/week3.html>



School Space Breakdown, Total ~ 2,268,600 ASF



Initial Observation:

Per Enrollment Data on the next slide, there does not seem to be a correlation between allocated ASF and Enrollment (compare JSOE to Social Sciences).

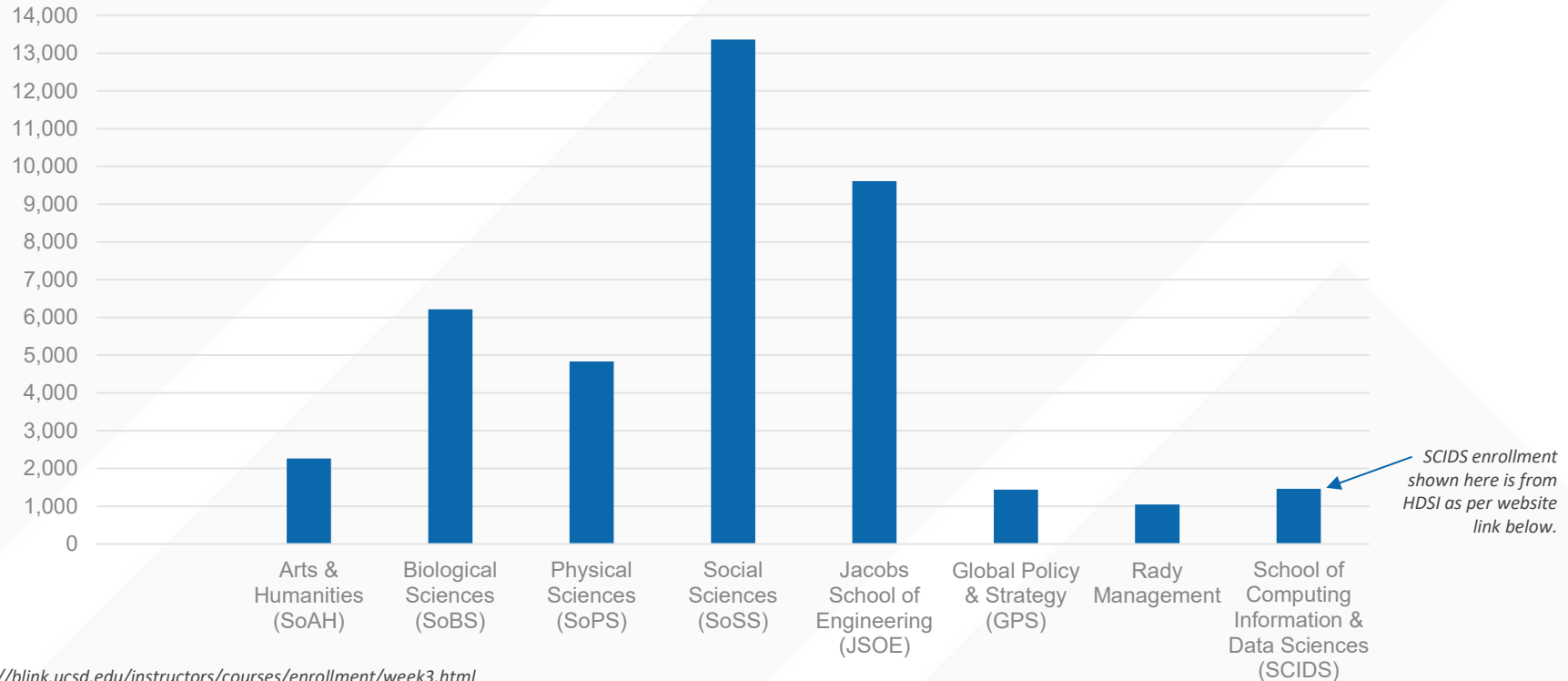
Next Steps:

Allows leadership/decision makers to investigate other causes of inequities between allocated SF, such as Research dollars, size of faculty and graduate programs, gifts, etc.

Economics will vacate temporary space (9,500 SF) and occupy approximately 29,000 ASF when they move to RWN LLN late 2025.

Enrollment by School

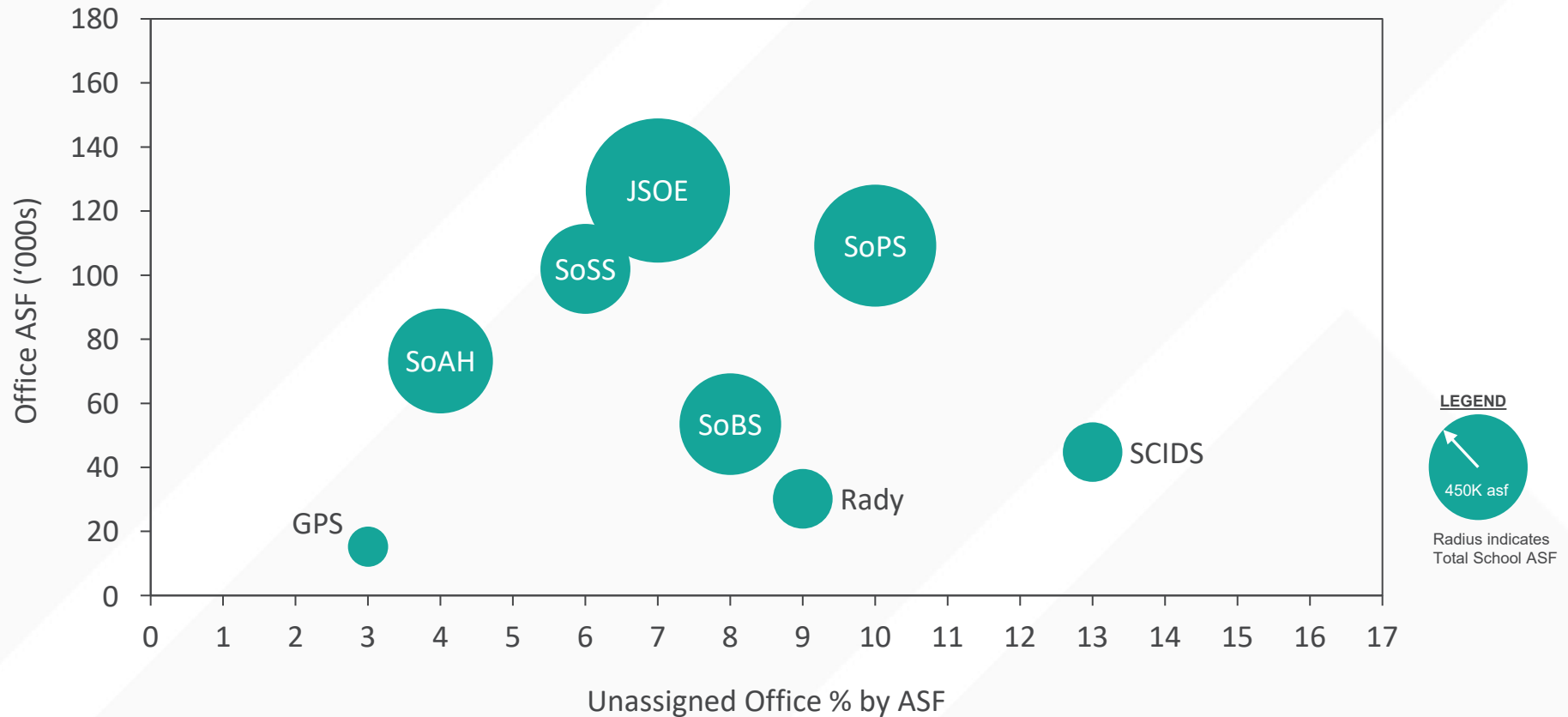
FA24 Enrollment



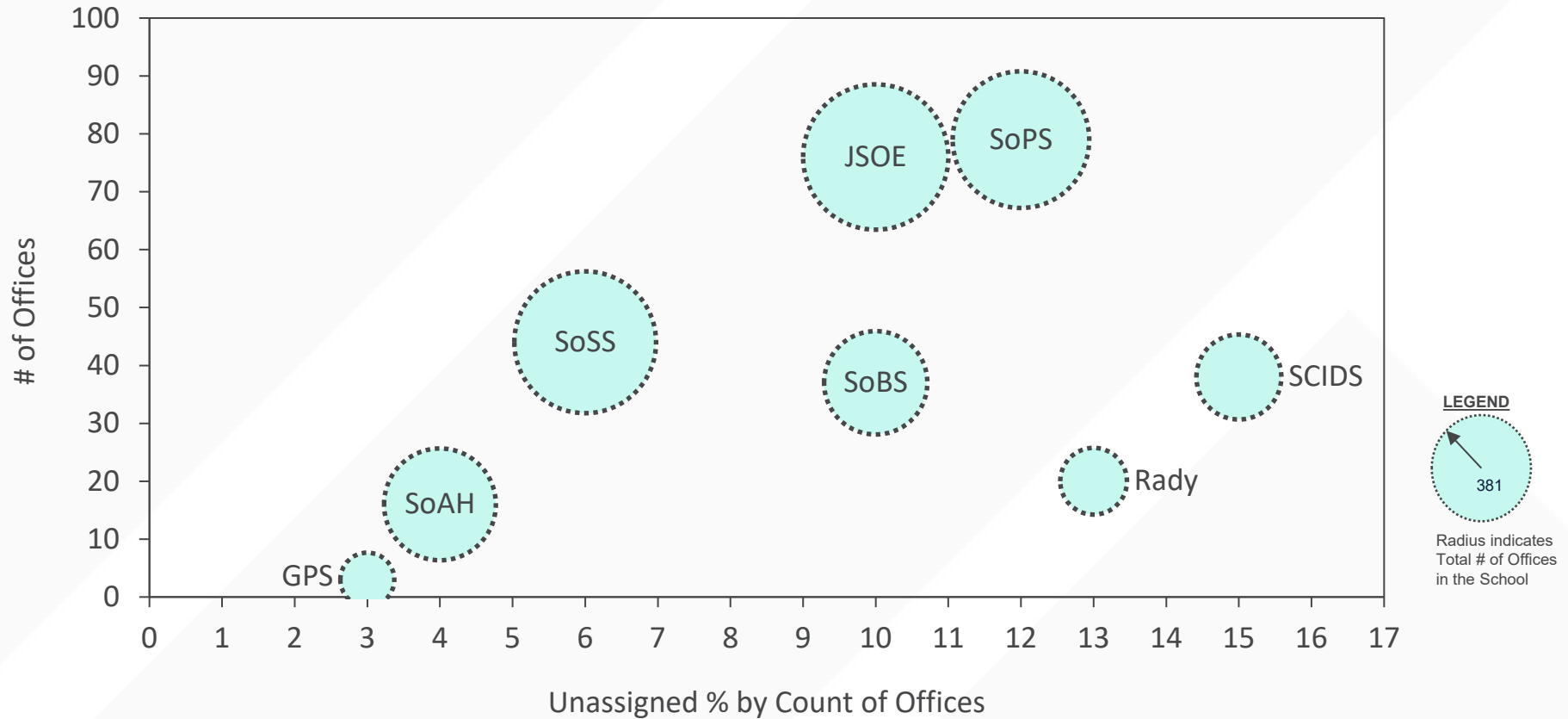
Source: <https://blink.ucsd.edu/instructors/courses/enrollment/week3.html>

Enrollment includes Undergraduate, General Graduate, and Self-Supporting

Schools – Unassigned Offices by ASF



Schools – Unassigned Offices by Count



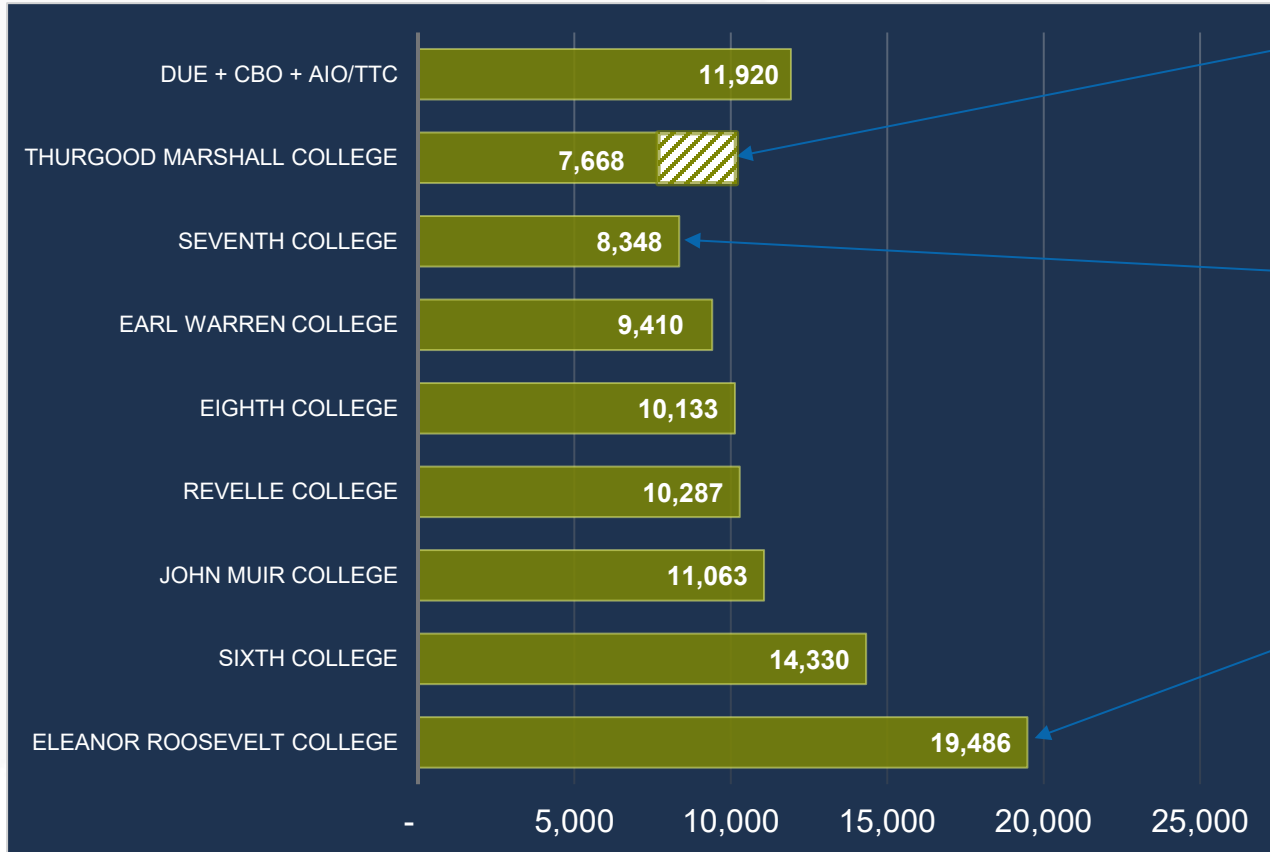
Colleges

8 Colleges + DUE

SUMMARY

Colleges	Total Allocated Space ASF	Unassigned Offices by ASF			Unassigned Offices by Count		
		Total	Unassigned	Unassigned %	Total	Unassigned	Unassigned %
Revelle College	10,287	4,924	591	12%	32	4	13%
John Muir College	11,063	6,488	813	13%	47	8	17%
Thurgood Marshall College (Temp Location) 11,000 asf @ RWN LLN	7,668	3,480	554	16%	31	9	29%
Earl Warren College	9,410	4,713	253	5%	33	2	6%
Eleanor Roosevelt College	19,486	6,080	684	11%	33	3	9%
Sixth College	14,330	4,195	151	4%	32	1	3%
Seventh College	8,348	4,753	401	8%	36	2	6%
Eighth College (New College/Podemos)	10,133	4,933	1,342	27%	32	10	31%
SUBTOTAL	90,725	39,566	4,789		276	39	
Division of Undergraduate Education:							
Division of Undergraduate Education (DUE)	2,031	1,089	114	10%	7	1	14%
Colleges Business Office (CBO)	2,848	1,786	244	14%	12	2	17%
Academic Integrity & Triton Testing Center (AIO/TTC)	7,041	2,829	0	0%	21	0	0%
<i>Source: Facilities Information System, Triton</i> SUBTOTAL	11,920	5,704	358		40	3	
GRAND TOTAL	102,645	45,270	5,147		316	42	

8 Colleges and DUE/CBO/AIO TTC Comprise ~ 102,650 ASF

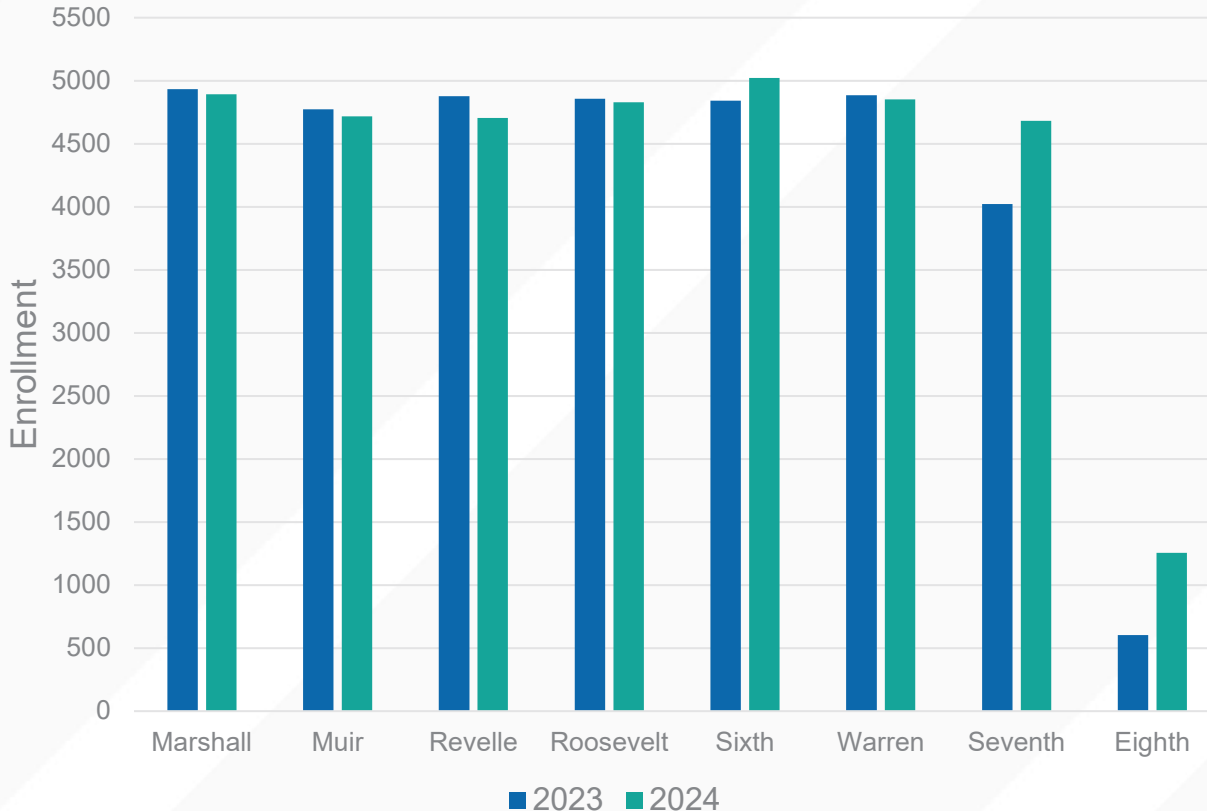


TMC will vacate temporary space (7,668 SF) and occupy approximately 11,000 ASF when they move to RWN LLN.

This includes 4,218 SF at Seventh College East Buildings #2, #3, #4 and #6, 2nd Floor and 4,130 SF at H&SS Building

ERC has a significantly larger space allocation than the other 7 Colleges. Team to investigate details and share with leadership to determine if a rebalance is recommended.

College Enrollment: Fall 2024 vs 2023



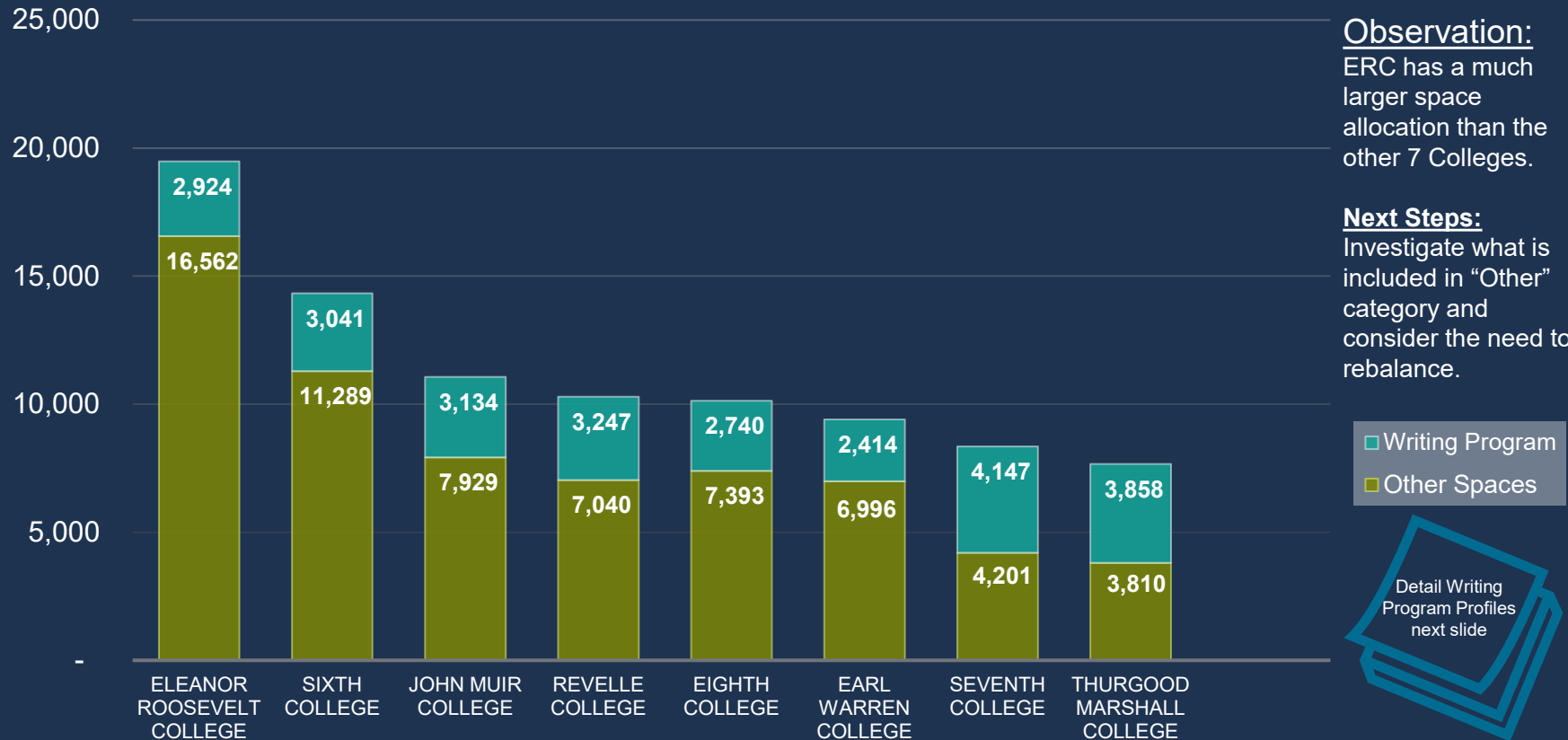
In May of 2019, the Regents approved establishment of Seventh College. Since then, enrollment has increased to levels consistent with the first six Colleges. In May of 2022, the Regents approved establishment of Eighth College.

Excerpt from the Regents item:

Establishment of Eighth College is needed to accommodate existing and anticipated undergraduate enrollments. While UC San Diego's steady state has been projected at 32,000 undergraduate students by 2035, unprecedented yield in the past several years has resulted in the campus being close to that target. Thus, at UC San Diego, there is the need to expand capacity. Six of the existing colleges each has an enrollment of over 5,000 (Seventh College, welcoming its inaugural class in 2020, has not yet reached steady state). Without an additional college, college enrollments will be much larger than was ever proposed for the residential college model and will adversely affect the capability of the campus to appropriately serve and support its students. The campus believes that enrollments at around 4,000 represent the right size for each college. UC San Diego's undergraduate college system is the key framework for supporting students' learning and development; adding Eighth College is intended to allow the campus to manage this enrollment growth in a way that ensures student success.

Source: <https://blink.ucsd.edu/instructors/courses/enrollment/week3.html>

College Writing Programs – Overall Space Comparison



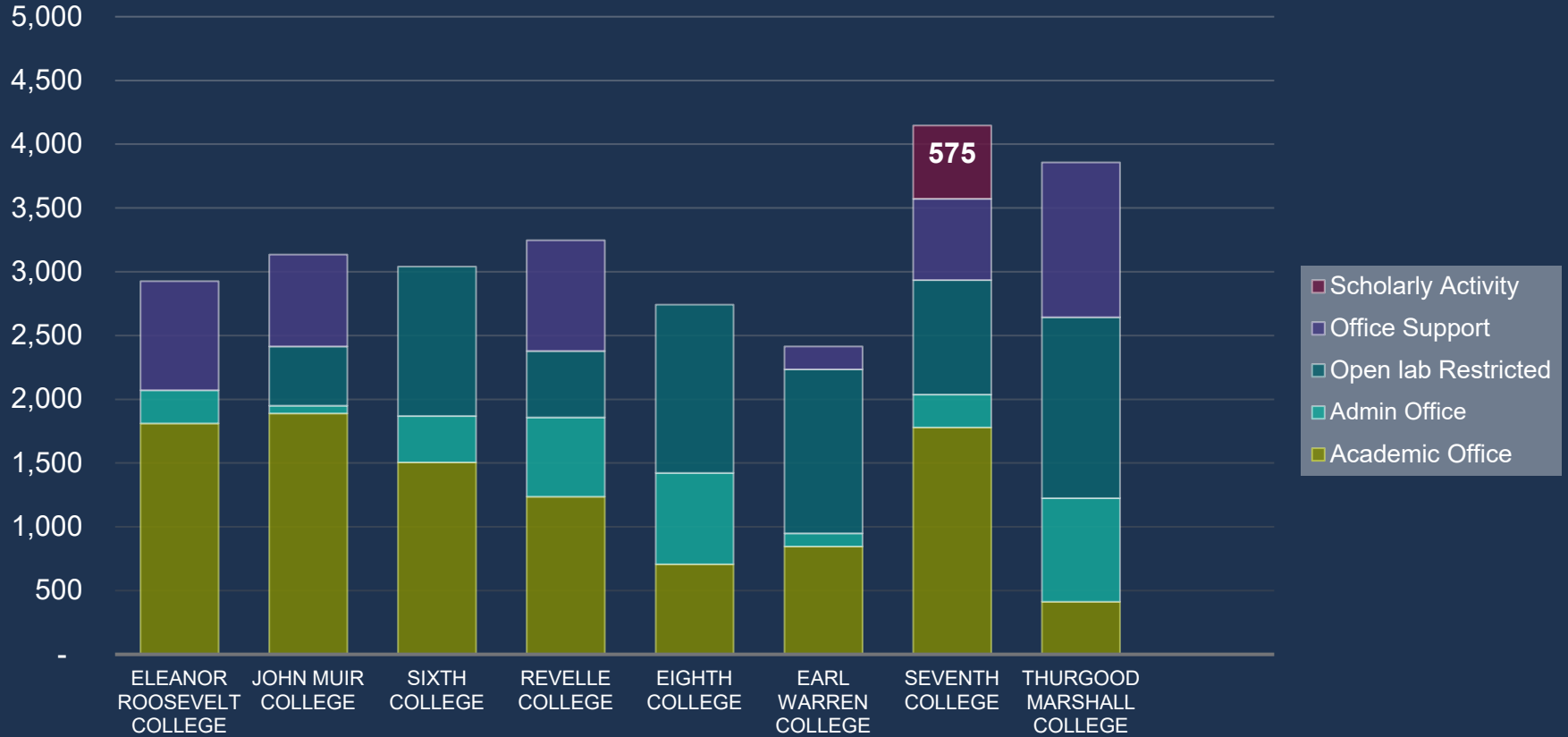
Observation:
ERC has a much larger space allocation than the other 7 Colleges.

Next Steps:
Investigate what is included in “Other” category and consider the need to rebalance.

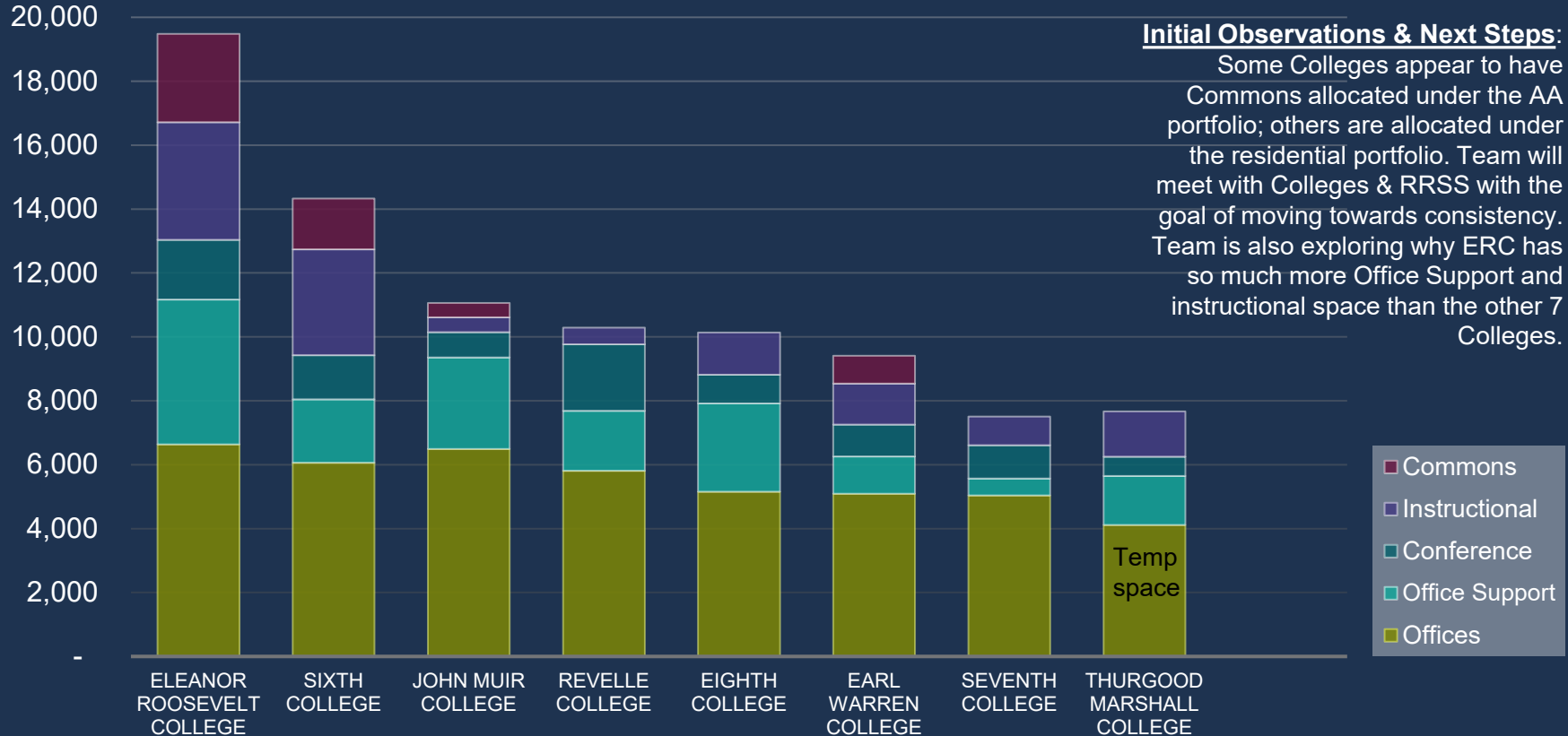
□ Writing Program
■ Other Spaces



College Writing Programs – Space Profile



College Space Classifications Profile



Administrative & Non-School Academic Units

Administrative & Non-School Academic Units

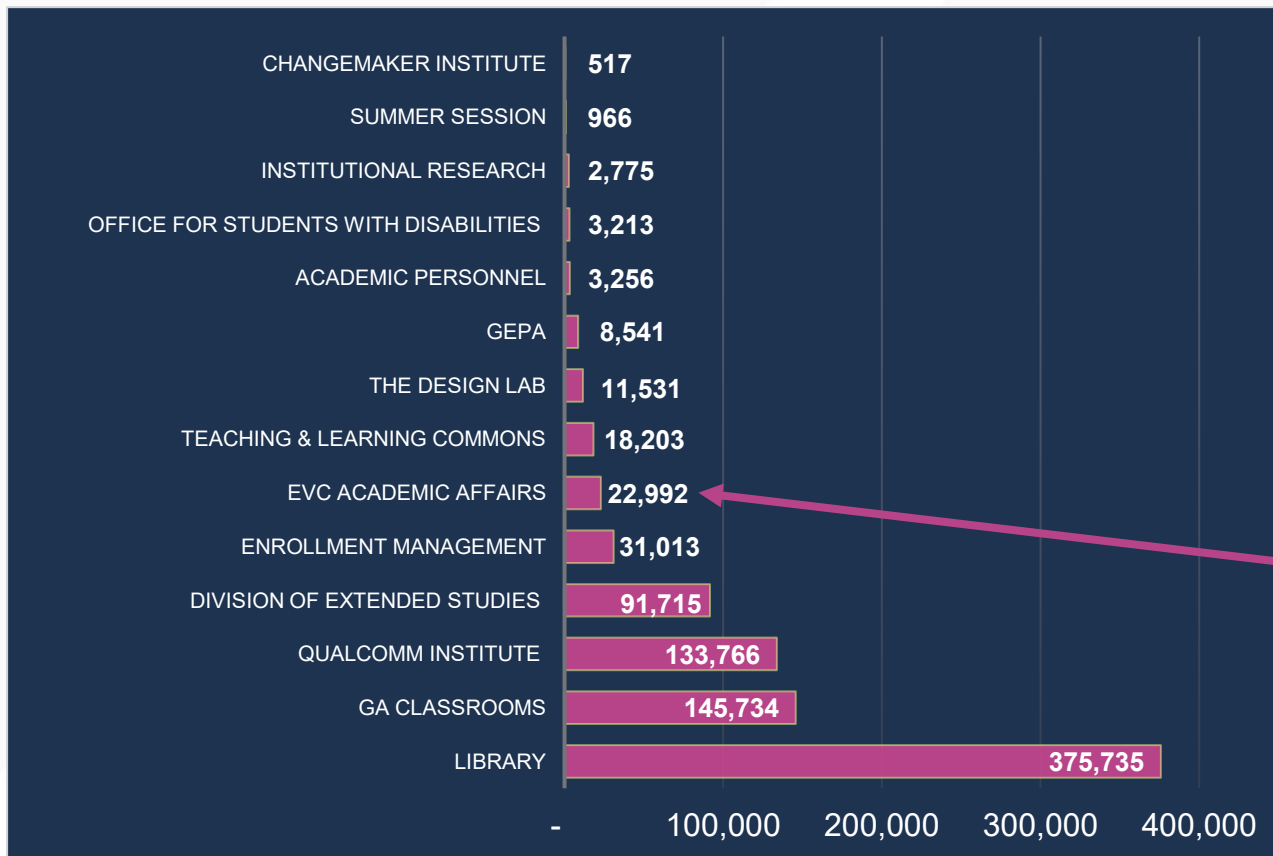
SUMMARY

Units	Total Allocated Space ASF	Unassigned Offices by ASF			Unassigned Offices by #		
		Total	Unassigned	Unassigned %	Total	Unassigned	Unassigned %
Library	375,735	23,428	4,161	18%	197	38	19%
SUBTOTAL	375,735						
Qualcomm Institute (QI) – <i>see slide 21</i>	133,766	16,949	0	0%	168	0	0%
The Design Lab	11,531	2,126	0	0%	18	0	0%
SUBTOTAL	145,297						
Academic Personnel (AP)	3,256	2,395	220	9%	17	2	12%
Changemaker Institute	517	517	131	25%	4	1	25%
Division of Extended Studies (DES)	91,715	13,146	2232	17%	128	16	13%
GA Classrooms	145,734	N/A					
Institutional Research (IR) ¹	2,775	1,299	0	0%	5	0	0%
Office for Students with Disabilities (OSD)	3,213	1249	0	0%	10	0	0%
Summer Session (SS) ²	966	633	0	0%	5	0	0%
Teaching & Learning Commons (TLC) ²	18,203	6761	1387	21%	27	6	22%
Enrollment Management	31,013	13,760	234	2%	138	3	2%
Division of Graduate Education & Postdoctoral Affairs (GEPA) ¹	8,541	4691	1440	31%	38	12	32%
EVC Academic Affairs ³	22,992	3,776	0	0%	24	0	0%
SUBTOTAL	328,925						
TOTAL	849,957	90,730	9,805		779	78	

Source: Facilities Information System, Tririga

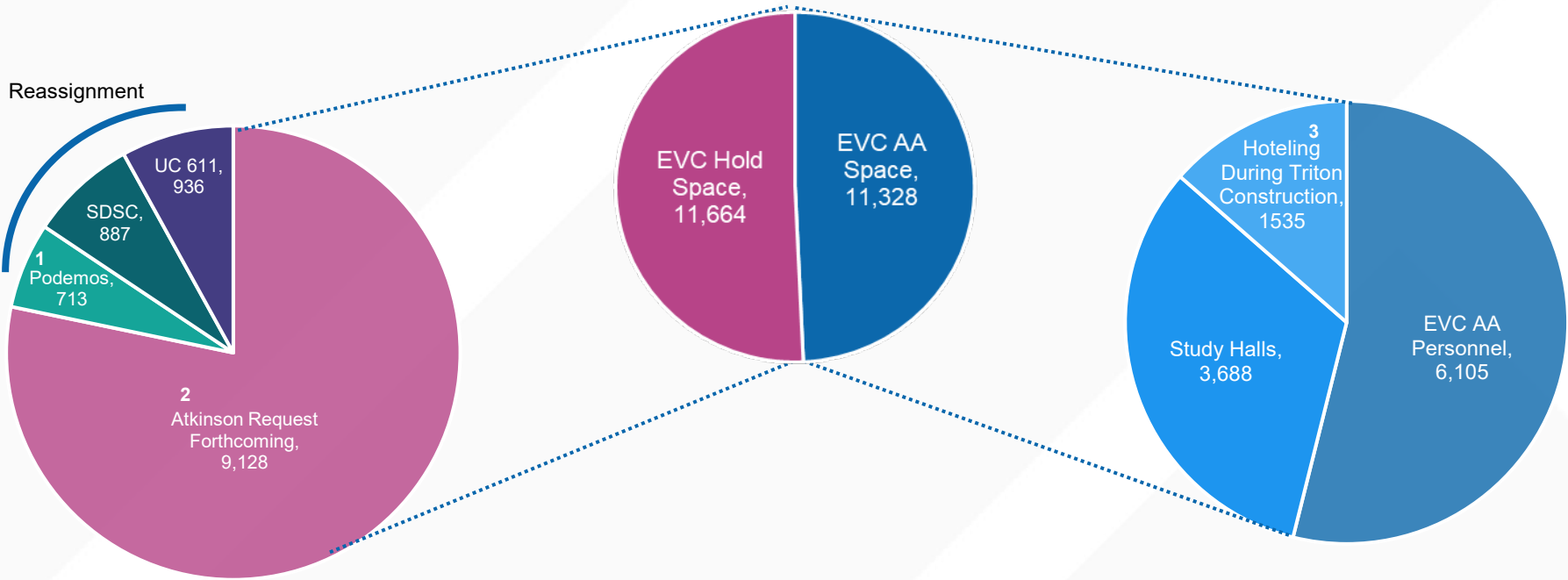
1. IR will be vacating UC 409 and consolidating into GEPA/Grad FSU suite at Student Services Center 4th floor in Spring 2025
2. Summer Session & TLC will fall under the newly created Education Innovation FinU following the OFC mapping in Tririga Winter 2025
3. See Slide 20 for EVC Academic Affairs space breakdown

Administrative & Non-School Academic Units Comprise ~ 850,000 Total ASF



See Next Slide for details

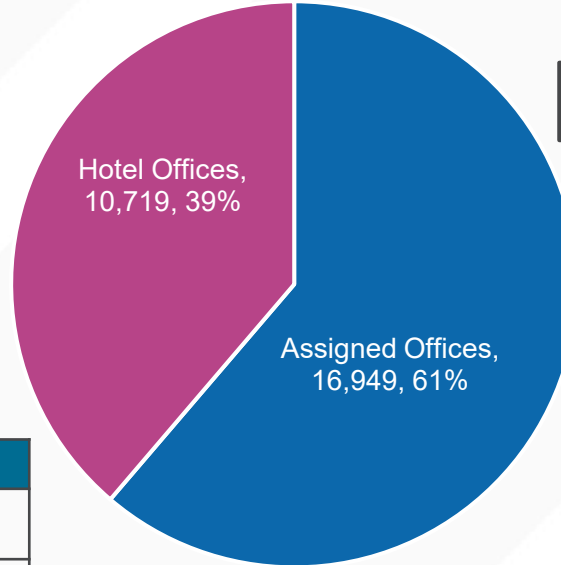
EVC Academic Affairs, ~ 23,000 ASF Breakdown



1 - Podemos Conference Rooms – 713 ASF
 2 – Atkinson of the 9,128 ASF space approx. 860 ASF will be used by EVC Core Team

3 - Hoteling During Triton Construction, 1535 asf comprises of:
 Mandeville EVC Hoteling – 550
 Podemos Offices EVC Hoteling – 470
 SSC EVC Hoteling - 515

Qualcomm Institute Includes ~ 27,700 ASF of Office Space



❖ Only Assigned Offices count towards Occupancy/Vacancy **not** Hoteling Offices

Initial Observation:

QI has a much higher percentage of Hoteling Offices compared to other similar sized units/schools.

Next Steps:

Suggest that Leadership determine how to use Live Density Data in decision making.

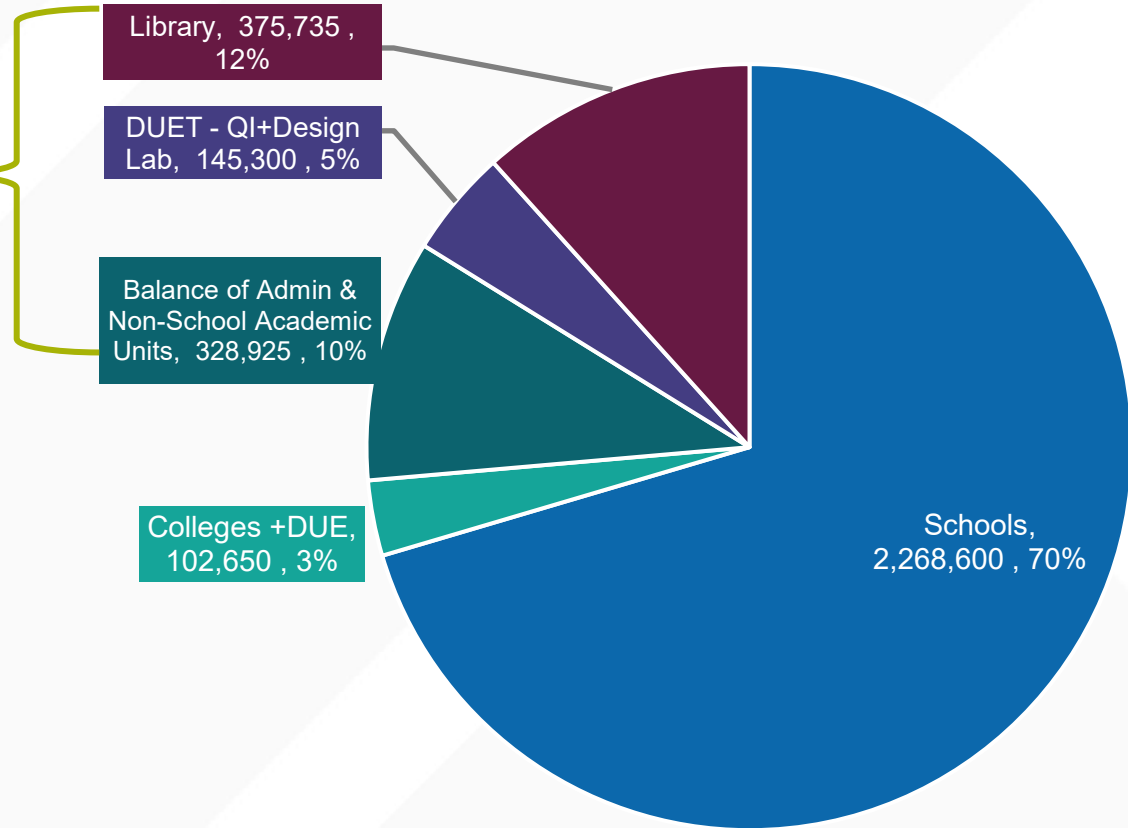
Study and make recommendation for appropriate amount of hoteling space

QI - Space Classification	ASF	%
Office Facilities Offices (~28K) and support spaces and 5K kit/break/print)	32,913	25%
Office Corridor (open office downside)	30,626	23%
Research & Teaching Laboratory Facilities Research Lab/Studio, Shop - Teaching Lab	40,788	30%
General Facilities Assembly, Exhibit, Commons	18,672	14%
Conference Room	6,261	5%
Special Use, Support Facilities & other	4,506	3%
TOTAL	133,766	100%

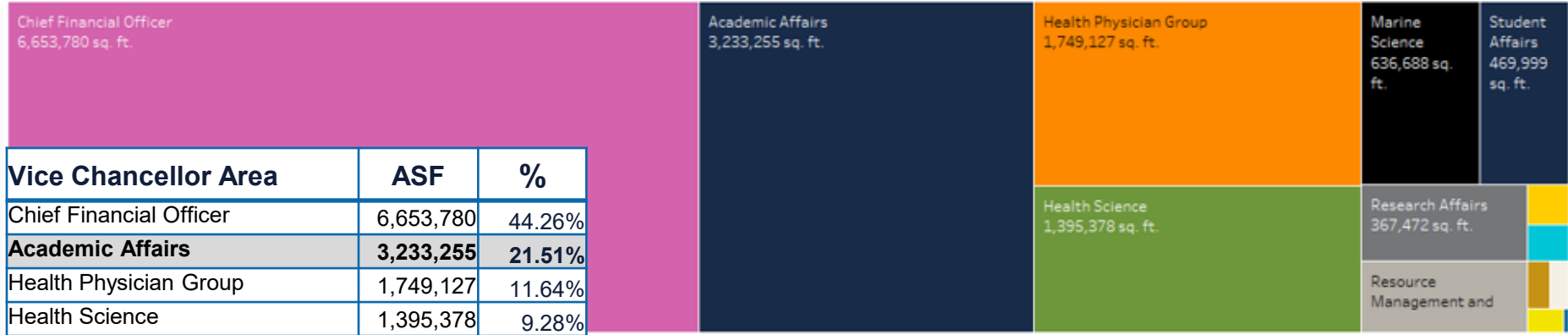
Big Picture: Academic Affairs Portfolio

Academic Affairs Comprises ~ 3.2M Total ASF or ~22% of Total Campus

Academic Affairs	3,221,210	100%
Schools	2,268,600	70%
Colleges +DUE	102,650	3%
Admin & Non-School Academic Units	849,960	26%



AA Portfolio – Campus VC Area Tableau Dashboard



Vice Chancellor Area	ASF	%
Chief Financial Officer	6,653,780	44.26%
Academic Affairs	3,233,255	21.51%
Health Physician Group	1,749,127	11.64%
Health Science	1,395,378	9.28%
Marine Science	636,688	4.24%
Student Affairs	469,999	3.13%
Research Affairs	367,472	2.44%
Resource Management and Planning	348,776	2.32%
Advancement	47,698	0.32%
Chancellor	43,899	0.29%
CEO of Medical Center	31,374	0.21%
Equity Diversity Inclusion	25,716	0.17%
Foundation	25,560	0.17%
Academic Senate	3,681	0.02%
Campus Totals	15,032,403	100.00%

EVC AA Portfolio Total ASF	3,221,210
International Locations	28,254
AA Portfolio Adjusted	3,249,464
AA Total on Tableau Dashboard	3,233,255
Variance due to timing of Data Pull *Tririga is an active database	0.50%

Observations & Next Steps Summary

Key Take-Aways from the 2024 Fall Space Review

Schools:

1. There does not seem to be a correlation between enrollment and allocated square-footage (example: compare JSOE and Social Sciences). Investigate other causes of differences between allocated SF, such as research dollars, size of faculty and graduate programs, gifts, etc.
2. Explore opportunities for shared teaching and research labs across Phys Sci, Soc Sci and Bio Sci;
3. Continue to explore and pursue opportunities to share large departmentally-scheduled instructional spaces with Registrar.

Colleges:

1. Per the EVC's Space Management Guidelines, an All-Colleges Space Policy will be established with the goal of achieving consistency around how space is classified and managed. The existing MOU with RRSS (formerly HDH) provides a good starting point that informs how Common Areas should be managed. We will collaborate with the DUE/CBO, the Council of Provosts, and RRSS on tying the two documents together.
2. ERC has a much larger space portfolio than the other 7 Colleges. Team will investigate details and share with leadership to determine if a rebalance or reallocation is recommended.

Administrative & Non-School Academic Units:

1. Continue to evaluate Hybrid Work Schedules and Operational Needs to further optimize use of space with the goal of condensing and freeing up space to be reallocated in support of mission-critical activities that require on-campus space.
2. QI has a much higher percentage of Hoteling Offices compared to other similar sized units/schools. Suggest that Leadership determine how to use Live Density Data in decision making. Study and make recommendation for appropriate amount of hoteling space

UC San Diego